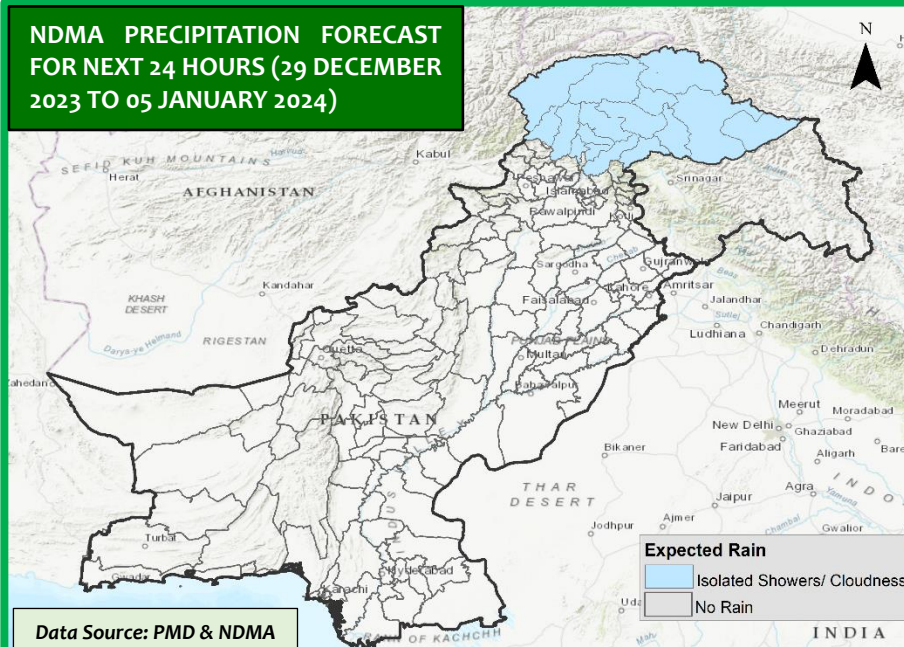




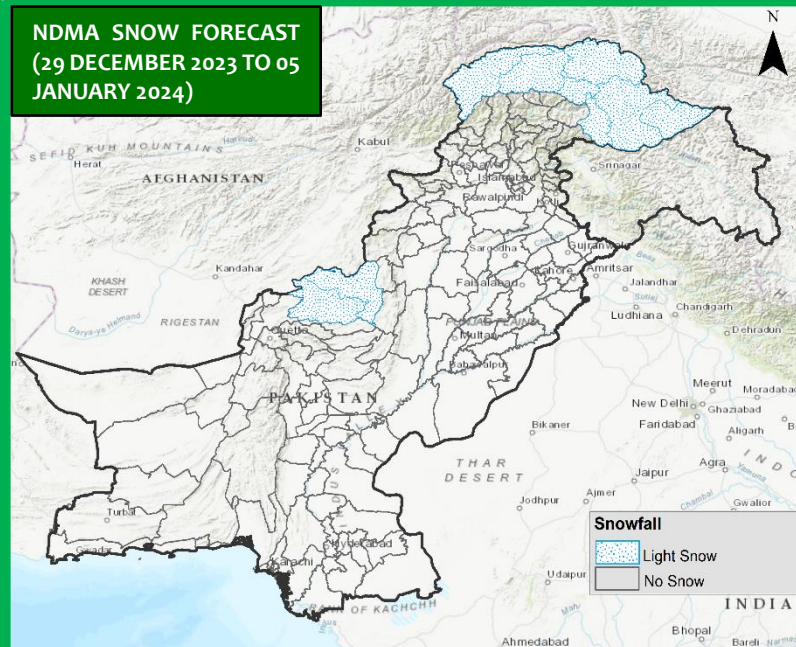
NDMA EXECUTIVE UPDATE – WINTER HAZARDS (29 DECEMBER 2023 TO 05 JANUARY 2024)



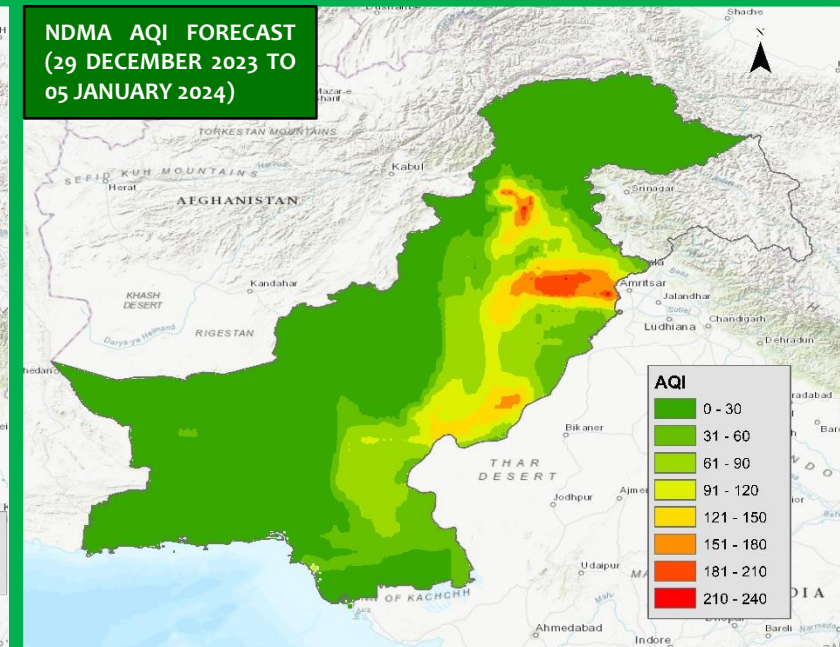
NDMA PRECIPITATION FORECAST FOR NEXT 24 HOURS (29 DECEMBER 2023 TO 05 JANUARY 2024)



NDMA SNOW FORECAST (29 DECEMBER 2023 TO 05 JANUARY 2024)



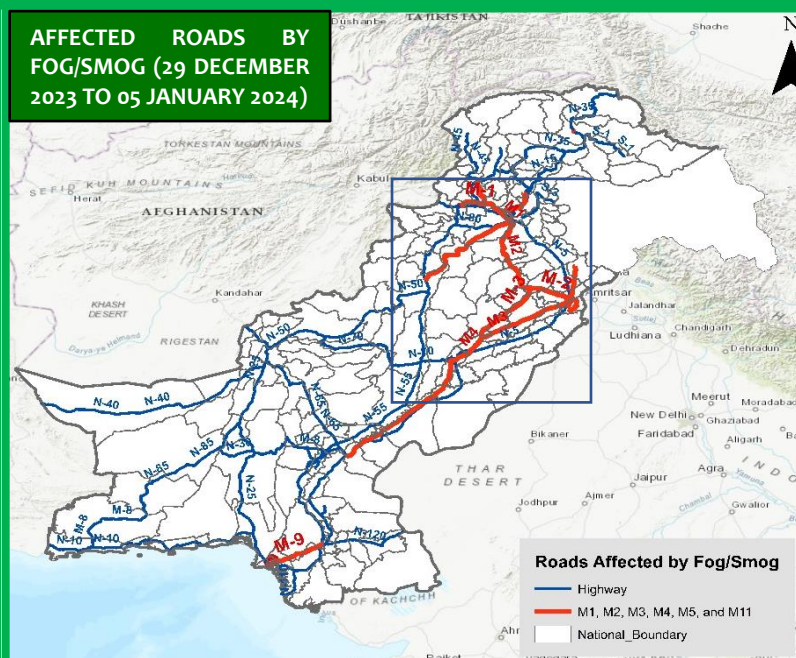
NDMA AQI FORECAST (29 DECEMBER 2023 TO 05 JANUARY 2024)



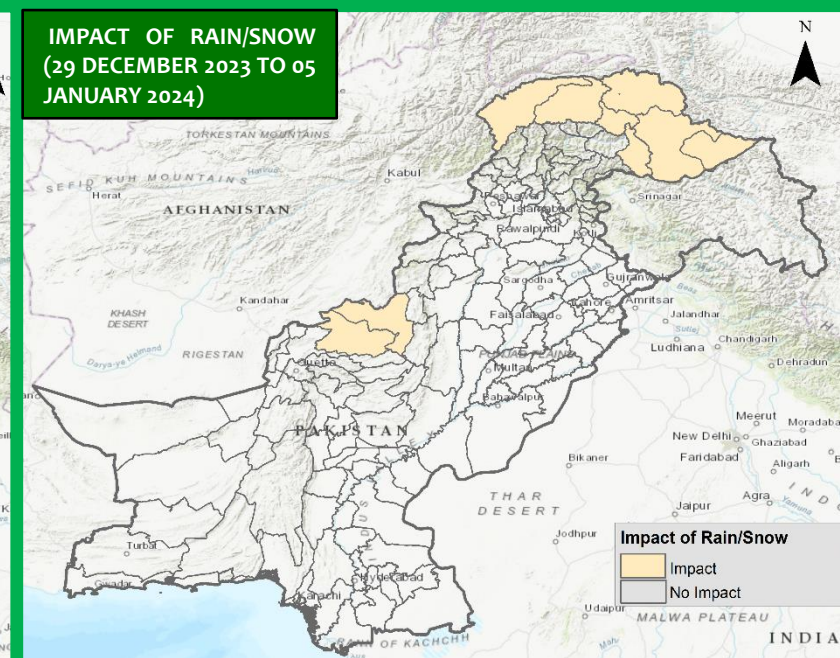
TOP RAIN / SNOW RECORDED LAST 24 HOURS (MM)

- **Balochistan.** Nil
- **Khyber Pakhtunkhwa.** Nil
- **Punjab.** Nil
- **Sindh.** Nil
- **Gilgit-Baltistan.** Nil
- **State of AJ&K.** Nil
- **Islamabad Capital Territory.** Nil

AFFECTED ROADS BY FOG/SMOG (29 DECEMBER 2023 TO 05 JANUARY 2024)



IMPACT OF RAIN/SNOW (29 DECEMBER 2023 TO 05 JANUARY 2024)



FORECASTED IMPACTS

- No **adverse weather systems** expected during this week (29 DECEMBER 2023 TO 05 JANUARY 2024)

WEATHER FOR COMING WEEK

- Balochistan.** Mainly **dry weather** with **cold temperatures** will persist in all parts of the province while **light snow** is expected in the north western areas of the province.
- Khyber Pakhtunkhwa.** **Dry weather** is expected in most parts of the area while **cold temperature** conditions with **dense fog** during morning and night times, are likely to persist in all parts of the province.
- Punjab.** **Dry weather**, while **dense fog/smog conditions** will persist during morning and night times in various parts of the province.
- Sindh.** **Dry weather** with **cool nights and foggy / misty mornings** are expected to prevail over the province.
- Gilgit Baltistan.** **Light snow** is expected in high-elevated areas of the province.
- State of AJ&K.** **Cold weather** with **cloudiness** with **light precipitation** is expected in most areas.
- Islamabad Capital Territory.** **Cold and partly cloudy weather** is likely to persist in the city.

GUIDANCE ISSUED

- PDMA to undertake **regular public awareness on all media channels / social media** to maximise general public's **knowledge on risks associated with winter season**; colder temperatures, freezing rain, snowfall, fog, smog, etc.
- NHA / FWO / Local C&W Depts to **ensure pre-placement of machinery** and **timely clearance of snowfall from roads / highways**.
- Rescue Services, Armed Forces and leading NGOs / CSOs to **ensure availability of personnel / equipment** in the indicated areas & **be on stand-by for rapid response** in case of any forecasted adverse weather systems.

WEATHER OUTLOOK – TOURIST LOCATIONS – NEXT 7 DAYS		
Locations	Isolated Thunderstorm/Rain / Snowfall	Temperature (°C)
Murree	Light Snow	-2 to 8
Galiyat	Light Snow	-3 to 7
Naran	Moderate Snow	-7 to 5
Kaghan	Moderate Snow	-8 to 6
Malamjabba	Moderate Snow	-1 to 9
Kalam	Light Snow	-2 to 10
Neelum	No Snow to Very Light Snow	-1 to 7
Naltar	Light Snow	-8 to 2
Rattu	Light Snow	-5 to 1
Skardu	Moderate Snow	-7 to 2

LOW VISIBILITY ADVISORY
Drive cautiously on roads (M1, M2, M3, M4, M5, M11 and M14) and link roads affected by dense fog/smog. Maintain a safe following distance and reduce speed to adapt to limited visibility,
Avoid high beams because they can reflect off fog/smog particles, worsening visibility. Stick to low beams instead. Use fog lights to improve visibility close to the ground.
Stay tuned to weather updates and be aware of any changes in visibility conditions during your journey.

TOURIST ADVISORY
Tourists visiting areas susceptible to snow are advised to remain vigilant as light snow is expected in different parts of the country.
Tourists visiting areas of Gilgit-Baltistan are highly advised to remain alert, as light snow, is expected in the coming days.
While no to light precipitation is expected in the coming days in AJ&K, tourists visiting Kashmir, especially Neelum Valley, should be prepared for chilly temperatures, particularly during the evenings and early mornings.